

APPLIED AI FIELD NOTES

— EXECUTIVE BRIEF

*Monitoring with
Claude Usage &
Analytics API*

Tom M. Gomez

May 27, 2026



INTRODUCTION & API OVERVIEW



INTRODUCTION TO MONITORING APIS



Centralized Monitoring with APIs

Anthropic's Usage and Analytics APIs deliver unified visibility into organizational activity and resource consumption.



Actionable Productivity Metrics

Track developer sessions, code changes, and tool adoption to inform performance and workflow improvements.



Cost and Adoption Insights

Analyze token usage and estimated costs by model to optimize spending and justify AI investments.



Data-Driven Executive Decision Making

Leverage daily aggregated metrics for strategic planning, compliance, and ROI assessment.

UNDERSTANDING THE USAGE & COST API



Comprehensive API Usage Tracking

- Monitors activity across all Anthropic services for a unified view



Cost Analysis & Allocation

- Enables detailed breakdown of spending by team or project
- Supports informed budgeting and resource planning



Spending Pattern Monitoring

- Identifies trends and anomalies in API consumption
- Facilitates proactive management of **usage and costs**

EXPLORING THE CLAUDE CODE ANALYTICS API

Daily Usage Insights

- Aggregates user activity and productivity metrics for each day
- Tracks sessions, code changes, commits, and pull requests

Developer Productivity Analysis

- Monitors individual and team performance using Claude Code
- Evaluates tool adoption and acceptance rates across Edit, MultiEdit, Write, and NotebookEdit tools

Custom Reporting & Dashboards

- Enables export of metrics for executive dashboards and management reports
- Supports cost tracking and model-level breakdowns for informed decision-making



KEY METRICS AND DATA HANDLING



KEY METRICS FOR MONITORING



Tracking Developer Activity

Monitor daily sessions, code additions/removals, and key actions like commits and pull requests.



Analyzing Tool Engagement

Evaluate acceptance and rejection rates for Edit, MultiEdit, Write, and NotebookEdit tools to gauge adoption.



Cost and Token Utilization

Review token consumption and estimated costs by Claude model for informed resource allocation.

DATA AGGREGATION AND FRESHNESS



Daily Data Aggregation

- Usage and productivity metrics are compiled every day for each user.
- Supports organization-wide analysis of developer activity and tool adoption.



Timely Data Availability

- Metrics are accessible with up to a **1-hour delay** after activity completion.
- Ensures data is consistent and ready for executive reporting and dashboards.



Reliable Insights for Decision-Making

- Aggregated data provides a stable foundation for monitoring trends and productivity.
- Supports confident, data-driven decisions on tool adoption and resource allocation.

USER IDENTIFICATION AND DIMENSIONS

User Identification Methods

- Users tracked via **email address** (OAuth) or **API key name** for precise attribution

Organizational Context

- Each activity is linked to a unique **organization ID** for clear reporting

Customer Type Classification

- Distinguishes between **API customers** and **subscription customers** (Pro/Team plans)

Terminal and Environment Tracking

- Records the terminal type (e.g., **VSCode**, iTerm, tmux) to analyze usage patterns

PAGINATION AND DATA HANDLING

Efficient Data Retrieval

- Cursor-based pagination enables seamless access to large volumes of analytics data.
- Supports stable navigation through daily user activity records without performance bottlenecks.

Consistent and Reliable Results

- Pagination ensures no records are missed or duplicated, even as new data arrives.
- Maintains a consistent data boundary for each session, supporting accurate reporting.

Scalable Analytics for Organizations

- Designed to handle organizations with large numbers of users and extensive activity logs.



USE CASES, COMPLIANCE, & INTEGRATION





COMMON USE CASES FOR EXECUTIVES

Accelerating Development Insights

- Leverage daily aggregated metrics to visualize team coding activity and identify productivity trends
- Monitor sessions, code changes, commits, and pull requests for actionable performance analysis

Comparative AI Tool Evaluation

- Export usage data to benchmark Claude Code against other AI coding solutions
- Track adoption rates and tool acceptance to inform strategic technology investments

Cost and ROI Monitoring

- Analyze estimated costs and token usage by model for transparent budgeting
- Justify and expand Claude Code adoption with concrete usage and value metrics

COMPLIANCE AND DATA RETENTION



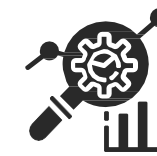
Persistent Data Access

Historical analytics data remains available for organizational review and audit.



Compliance-Ready Reporting

Supports internal and external compliance requirements with accessible records.



Audit Trail Assurance

Enables robust audit trails for monitoring developer activity and tool usage.

INTEGRATION AND CUSTOMIZATION



APIs Support Tailored Integration

Usage and Analytics APIs allow organizations to build custom dashboards and reporting solutions.



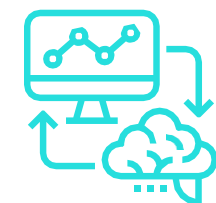
Flexible Data Export

Export metrics for executive dashboards, productivity analysis, and cost tracking.



Enhanced Tracking with User-Agent

Setting a User-Agent header in integrations helps monitor and analyze usage patterns effectively.



Optimize Adoption and ROI

APIs provide actionable insights to justify and expand Claude Code adoption internally.

LIMITATIONS AND EXECUTIVE TAKEAWAYS



LIMITATIONS AND SUPPORTED DEPLOYMENTS

→ Claude API Exclusivity

- Usage and analytics APIs monitor activity only on the Claude API Platform.
- Deployments on AWS, Bedrock, or Vertex AI are not tracked.

→ Daily Aggregated Metrics

- APIs provide metrics aggregated by day, not in real time.
- Data is typically available within **1 hour** after activity completion.

→ Supported Deployments

- Only Claude API usage is included; other platforms are excluded from analytics.

WRAP-UP & REFERENCES

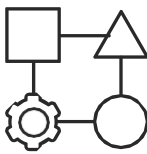


TAKEAWAYS FOR EXECUTIVE ACTION



Unlock Data-Driven Oversight

APIs deliver actionable metrics on developer activity, tool adoption, and cost trends.



Drive Productivity & Adoption

Monitor sessions, code changes, and tool usage to identify high-performing teams and optimize workflows.



Enable Executive Reporting

Export daily analytics for custom dashboards, supporting strategic decisions and ROI justification.



Support Compliance & Cost Control

Track spending patterns and ensure data retention meets organizational standards.



4 QUESTIONS FOR THE MONDAY MORNING MEET

1) Are Bedrock and Vertex workloads invisible to us?

- The APIs only track the Claude API Platform – AWS, Bedrock, and Vertex deployments are not covered. How much of our spend are we flying blind on?.

2) Who owns the daily pull – and at what cadence?

- Metrics aggregate by day with up to a 1-hour lag, not real time. Who runs the cursor-paginated export, and is daily granularity enough to catch a cost spike before it compounds?

3) Can we actually attribute cost to a team?

- Spend breaks down by model, org ID, and API key name – but does our key-naming convention map cleanly to teams, or are we reverse-engineering attribution after the fact?

4) Is “1-hour fresh” good enough for the decision it feeds?

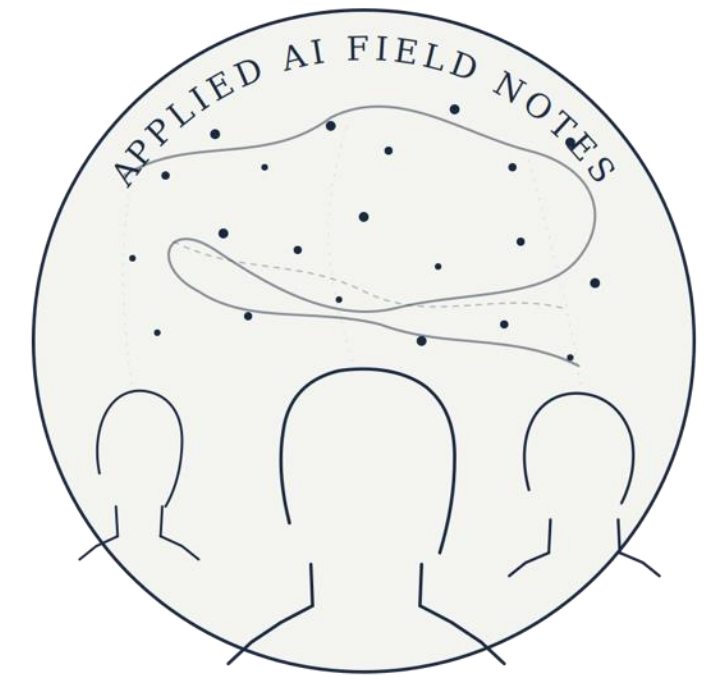
- We are treating daily aggregates as the basis for budgeting and adoption calls. Which decisions need real-time data we don’t have - and what’s the workaround?

REFERENCES

Mapping the empirical evidence. Discovering the patterns that matter for Agentic AI in production.

Read the detailed insights on the Luminity Digital Blog <https://www.luminitydigital.com/insights>

[Subscribe to our Weekly Newsletter](#) | **Follow us on LinkedIn** - <https://www.linkedin.com/company/luminity-digital>



LUMINITY DIGITAL

KEY REFERENCES:

- **Claude Usage & Cost API** – <https://platform.claude.com/docs/en/manage-claude/usage-cost-api>
- **Claude Code Analytics API** - <https://platform.claude.com/docs/en/manage-claude/claude-code-analytics-api>
- **Claude Enterprise Analytics API Ref Guide** - <https://support.claude.com/en/articles/13703965-claude-enterprise-analytics-api-reference-guide>
- **Get Started with the Claude Enterprise Analytics API** - <https://support.claude.com/en/articles/13694757-get-started-with-the-claude-enterprise-analytics-api>

This brief is an independent educational work; its content has not been reviewed or endorsed by Anthropic. Claude and the Usage & Cost API and Claude Code Analytics API are products of Anthropic, PBC; all referenced documentation and trademarks remain the property of Anthropic.

